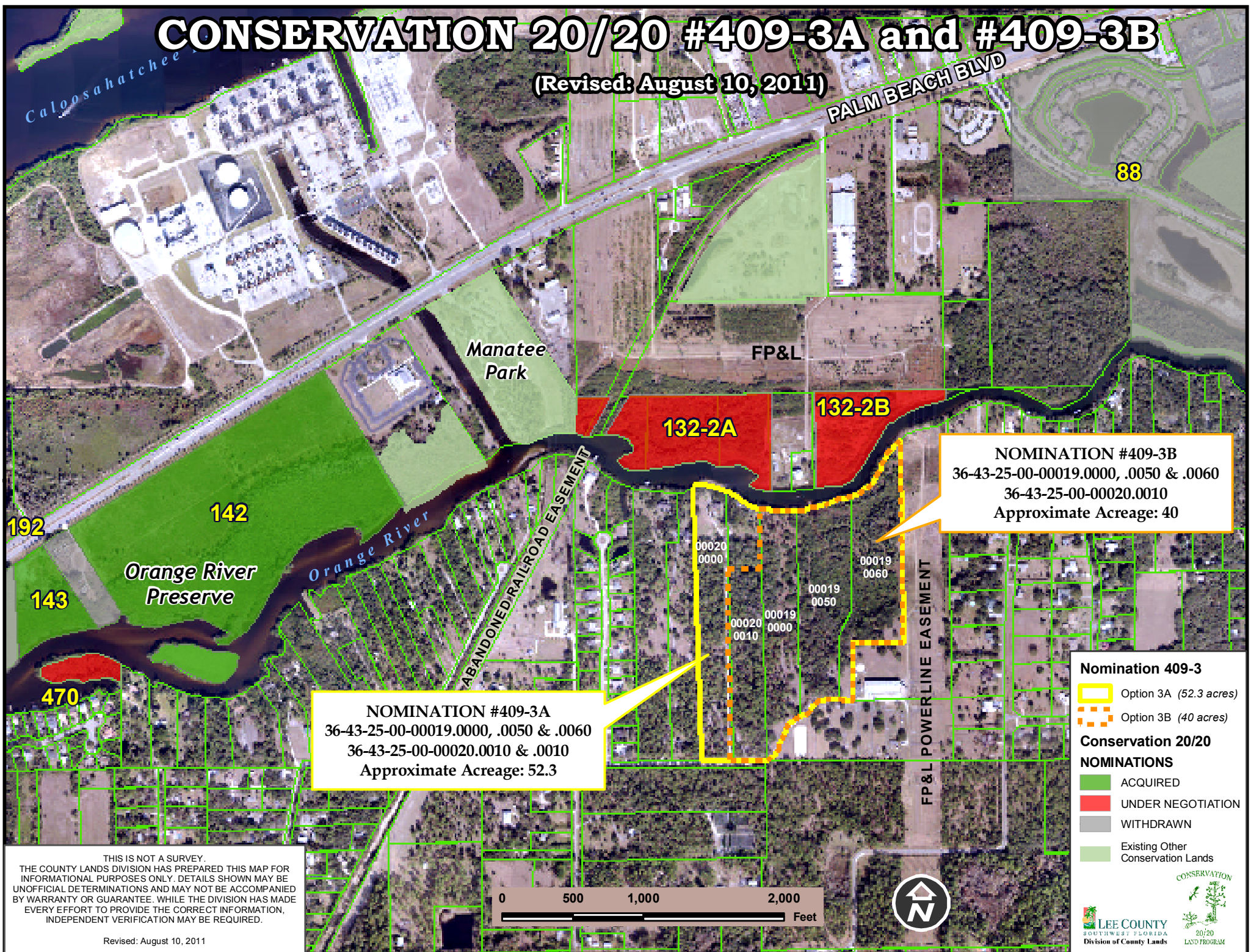


CONSERVATION 20/20 #409-3A and #409-3B

(Revised: August 10, 2011)



NOMINATION #409-3B
 36-43-25-00-00019.0000, .0050 & .0060
 36-43-25-00-00020.0010
 Approximate Acreage: 40

NOMINATION #409-3A
 36-43-25-00-00019.0000, .0050 & .0060
 36-43-25-00-00020.0010 & .0010
 Approximate Acreage: 52.3

Nomination 409-3

- Option 3A (52.3 acres)
- Option 3B (40 acres)

Conservation 20/20 NOMINATIONS

- ACQUIRED
- UNDER NEGOTIATION
- WITHDRAWN
- Existing Other Conservation Lands

LEE COUNTY
SOUTHWEST FLORIDA
Division of County Lands

CONSERVATION
20/20
LAND PROGRAM

THIS IS NOT A SURVEY. THE COUNTY LANDS DIVISION HAS PREPARED THIS MAP FOR INFORMATIONAL PURPOSES ONLY. DETAILS SHOWN MAY BE UNOFFICIAL DETERMINATIONS AND MAY NOT BE ACCOMPANIED BY WARRANTY OR GUARANTEE. WHILE THE DIVISION HAS MADE EVERY EFFORT TO PROVIDE THE CORRECT INFORMATION, INDEPENDENT VERIFICATION MAY BE REQUIRED.

Revised: August 10, 2011